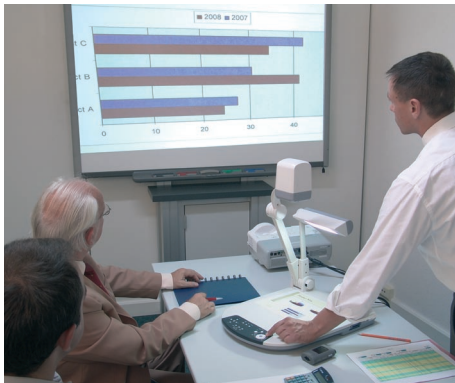


P10S

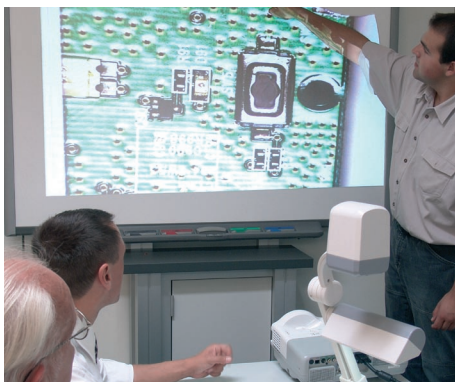
Visualiser



BUSINESS STUDIES ANALYSIS



PLANNING



TEAM DISCUSSIONS



YOUR FIELD OF APPLICATION



PRESENTATIONS

Specifications

Camera	Image pickup device	1/3" CCD, 850.000 pixels
	Effective pixels	1034 (H), 779 (B)
	Frame rate	20 frames / sec.
	Resolution RGB out	600(H) x 600(V) TV Lines
	Resolution Video out	450(H) TV Lines
Optics	Lens	F= 2,8; f= 4,7 to 75,2 mm
	Shooting area Max	405 x 303 mm
	Shooting area Min	29 x 22 mm
	Focus	automatic / manual
	Iris	automatic / manual
	Optical zoom	16 x
Functions	Digital zoom	8 x
	White balance	automatic / manual
	Posi/Nega - conversion	provided
	Text mode	provided
	Edge enhancement	provided (only in Graphic-Mode)
	Colour / Black + White Selection	provided
	Pause function	provided
	Gamma adjustment	provided
	OSD – (On screen display)	provided
	Slide show	provided (SD Memory Card image)
	Image save	provided (on to SD Memory Card)
	Image rotation	provided (0°, 180°)
	Split screen	provided (SD Memory Card image, 9-split, 16-split)
	User preset positions	provided (up to 6 user settings)
	Synch system	internal
	Movable arm	provided
Internal selection	Camera/RGB in	
Interface	RGB out	Mini DSUB 15P
	DVI out	provided
	RS 232	provided
	Video out Composite	Cinch
	Video out S-Video	Mini-DIN-4P-Buchse
	RGB in	Mini DSUB 15P
	USB	2.0 Type B
	SD-Memory card slot	provided
	Lighting	Upper lighting unit
Others	Accessories	AC adapter, Power cord, USB-Cable, Video Cable, S-Video-Cable, Analog-RGB-Cable, IR remote control, Batteries Type R03 AAA, Image Mate Software, Instruction manual
	Measurements Set up	377 x 482 x 582 mm (W x D x H)
	Measurements Folded	377 x 482 x 180 mm (W x D x H)
	Weight	4,6 Kg
	Power consumption	24 W
	Power source	12V DC (AC Adapter 100 -240 VAC)